

## WebCal™ Software

WebCal PC software is a utility program that allows users to easily configure their EchoSonic II and EchoPod level transmitters, switches and controllers. Download your free copy of WebCal at [www.flowline.com/webcal.php](http://www.flowline.com/webcal.php), and connect your sensor through our Fob USB® adapter. Develop your configuration using pre-programmed function menus as the tank graphic and set point fields automatically change to match your configuration. Then, input your level set point values and click the Write to Unit button. Your configuration will be downloaded into the sensor and tested in less than a second. Last, click the Wiring Diagram button to open an ACAD wiring schematic of your configuration in PDF format. Print the document, disconnect the sensor and wire it per the schematic. It's that simple.

Configuration files can be named, saved, emailed, printed, opened and used again under revision control. The advanced feature page enables you to change the measurement signal output filtering and invert relay states from NO to NC. As new software or firmware becomes available, they can be downloaded and updated through WebCal. Take control of your level process with WebCal software, and experience the future of level automation today.

### Compatible Sensors

#### EchoPod® Ultrasonic Sensors



DL34

Page 16



DL24

Page 15



DL14

Page 14



DS14

Page 17



DL10

Page 18



DX10

Page 19

#### EchoSonic® II Ultrasonic Transmitters



LU2X-0X

Pages 32-33



LU27-0X

Pages 32-33



LU2X-4X

Pages 34-35



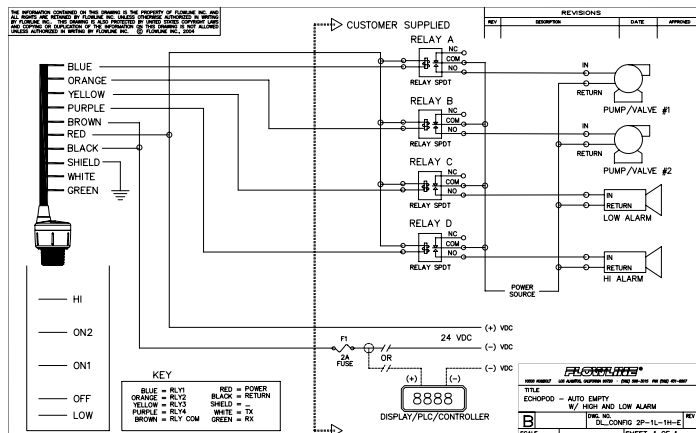
LU27-4X

Pages 34-35

# Sensor Configuration Made Simple

Software

## Wiring Diagram - Exportable PDF format



## Easy Configuration

- 169 configurations with pull down menu selections
- Graphic interface lets you visualize your configuration
- Applicable level set point fields appear automatically
- Installs and tests configuration in less than a second
- Available PDF wiring diagram for each configuration
- Technical help menu with FAQ's, tips and glossary
- Rapidly program sensors to the same configuration

## System Requirements

- Windows® 7, Vista, XP or 2000
- (1) USB® 2.0 Port
- 10 mB hard disk space
- 256 mB RAM



## Document Control

- Save configuration files for future use or reference
- Print wiring diagrams and configuration text files
- Email configuration files to other remote users

## EchoPod Configuration

The screenshot shows the EchoPod Configuration software interface. The interface is titled "FLOWLINE" and displays configuration settings for a sensor. The settings include Tank Levels (Units, Sensor Height, Fill Height), Output at Empty (4 mA at Bottom), Startup Condition (Empty), and various alarm and output options. The software is titled "FLOWLINE" and shows Part Number: DL14, Serial Number: 1001, and Firmware: DL14 FW Rev: 1.

## EchoSonic II Configuration

The screenshot shows the EchoSonic II Configuration software interface. The interface is titled "FLOWLINE" and displays configuration settings for a sensor. The settings include Tank Levels (Units, Sensor Height, Fill Height), Output at Empty (4 mA at Bottom), Startup Condition (Empty), and various alarm and output options. The software is titled "FLOWLINE" and shows Part Type: LU27, Serial Number: 1004, and Description: Transmitter, 98.4" (2.5m).